

KNX/LOGIC

---

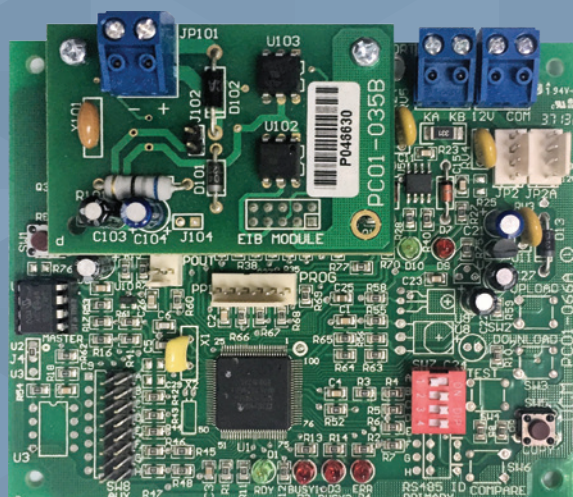
## KNX LOGIC PROCESSOR



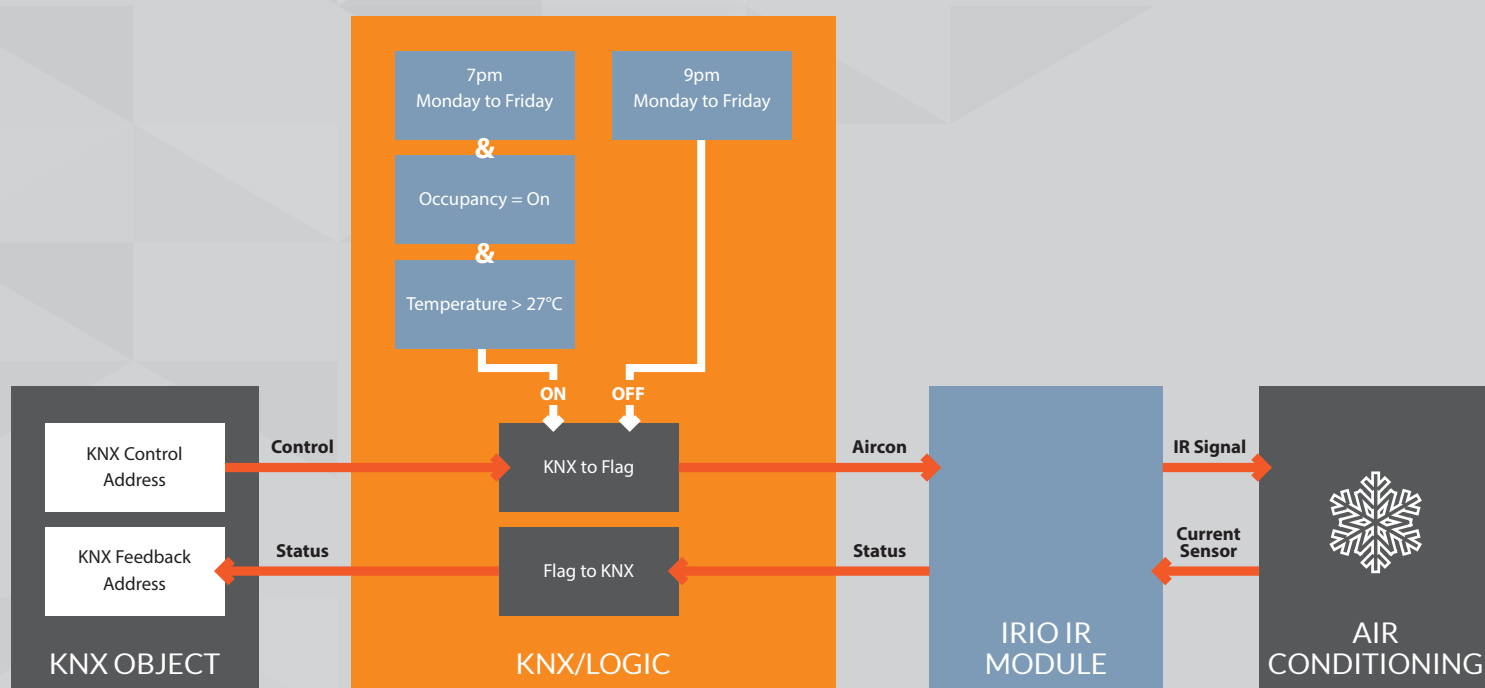
## PROGRAMMABLE LOGIC PROCESSOR FOR KNX WITH 3RD PARTY INTERFACES

### KEY FEATURES

- 2-way KNX Interface able to send and receive telegrams from KNX, with direct connection to KNX Bus
- 32 Time Programs for scheduling commands to KNX
- Synchronise KNX/Logic real time clock to KNX devices. KNX/Logic has automatic Daylight saving adjustments and Sunrise/Sunset times based on latitude and longitude. The optional UCM/ETH03 module is synchronised to Internet Time Servers
- Read Temperature and other sensors on the KNX bus or supply temperature readings or setpoints to KNX from Cytech modules like MSM01 Multisensor Module
- Functions as a central controller for a KNX network which is able to coordinate the functions of all the subsystems including security, lighting, HVAC, and others. KNX/Logic is able to take action based on conditional logic, for example, when the time is between 7 PM and 7 AM, on defined days of week etc
- Control KNX devices by the Cytech mobile app (for iOS/Android)
- Interfaces to other systems eg C-Bus, Modbus, etc by Cytech's other UCM interface modules.



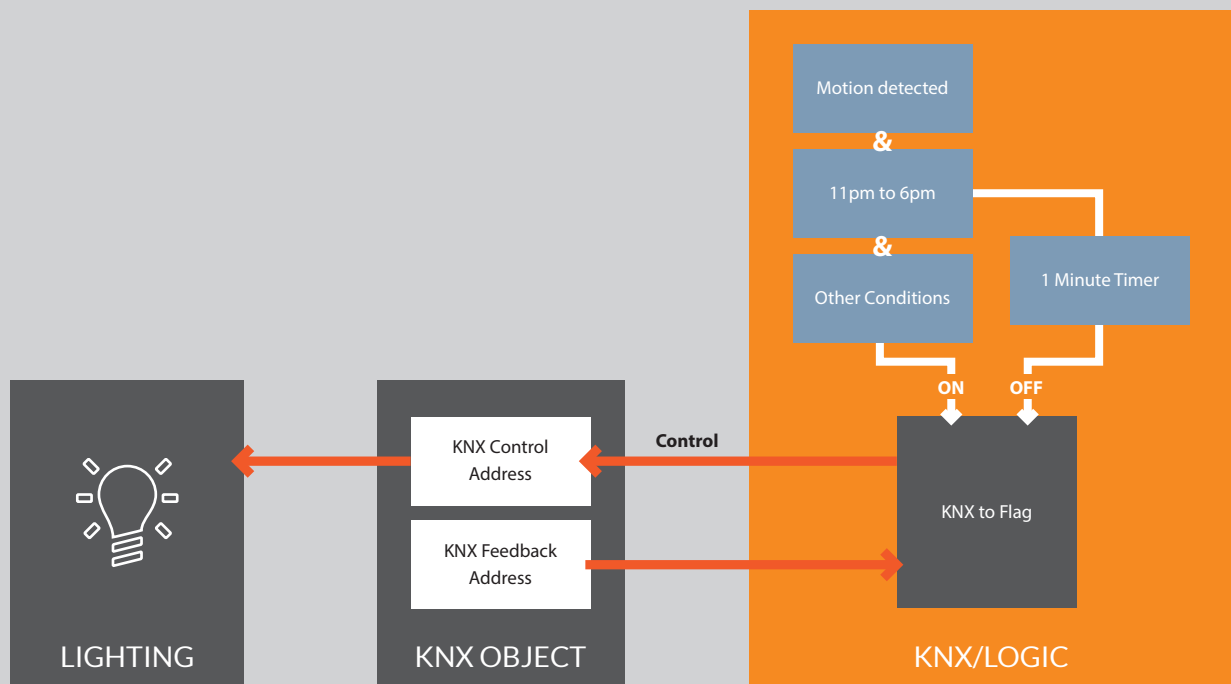
## KNX/LOGIC PROCESSOR MODULE



### EXAMPLE 1

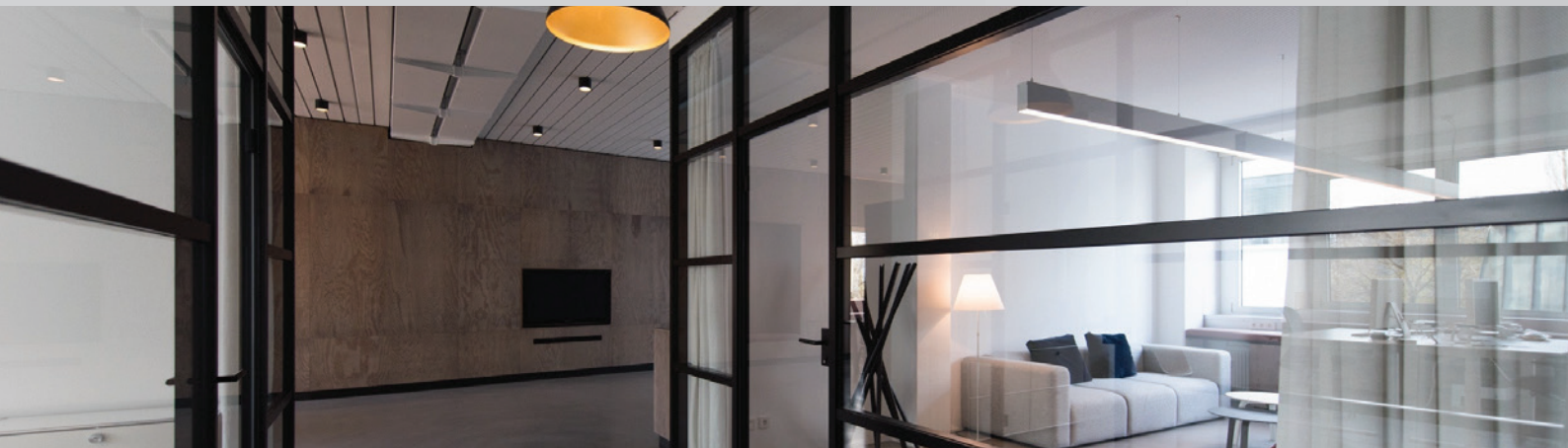
To demonstrate the capabilities of KNX/Logic this example diagram shows how a KNX switch can be used to control air conditioning by infrared signal while a current sensor provides status to the KNX switch feedback address using the IRIO (Intelligent Remote I/O) module.

Time programs can also be configured to automatically switch the devices on and off for selected days of week.



## EXAMPLE 2

KNX devices can also be controlled based on logic conditions as well as time of day, and timers can be programmed to switch off lights after a timed delay, as shown above.



## ABOUT CYTECH

Cytech Technology is the manufacturer of the Comfort Automation/Alarm System, Hotel Room Logic Controllers, and Environmental Monitoring Systems.

COMFORT

## SPECIFICATION

- Size (KNX/LOGIC PCB) ..... 108 x 88 mm
- Connection (to KNX) ..... KNX Bus Cable
- Communications ..... RS485 Bus
- Power Supply ..... 12V 1A
- Current Required ..... 30 mA
- KNX Objects supported ..... EIS1 (1-bit), EIS2 (4-bit), EIS3 (Time), EIS4 (Date),  
EIS5 (Float), EIS6 (1 byte), EIS10 (2 bytes)
- KNX Physical Address ..... 1.1.1 to 1.15.255
- KNX Addresses to KNX/Logic Mapping ..... 256
- KNX/Logic Registers ..... 256 Flags, 32 Sensors, 255 Counters
- Time Programs/Schedules ..... 32
- Timers for Logic ..... 64, programmable from 1 to 65535 seconds
- Programmable Responses ..... 512

Cytech Technology Pte Ltd  
55 Ubi Ave 1 #07-04, Singapore 408935  
Phone: +65 6846 9701  
Email: [info@cytech.biz](mailto:info@cytech.biz)  
Web: [www.cytech.biz](http://www.cytech.biz)  
Reg: 199506853M

**CYTECH**